

**MAPK13 Antibody (monoclonal) (M02)****Mouse monoclonal antibody raised against a partial recombinant MAPK13.****Catalog # AT2786a****Specification**

---

**MAPK13 Antibody (monoclonal) (M02) - Product Information**

Application	WB, IHC, IF, E
Primary Accession	<a href="#">O15264</a>
Other Accession	<a href="#">BC000433</a>
Reactivity	Human
Host	mouse
Clonality	Monoclonal
Isotype	IgG2b Kappa
Calculated MW	42090

**MAPK13 Antibody (monoclonal) (M02) - Additional Information****Gene ID** 5603**Other Names**

Mitogen-activated protein kinase 13, MAP kinase 13, MAPK 13, Mitogen-activated protein kinase p38 delta, MAP kinase p38 delta, Stress-activated protein kinase 4, MAPK13, PRKM13, SAPK4

**Target/Specificity**

MAPK13 (AAH00433, 251 a.a. ~ 365 a.a) partial recombinant protein with GST tag. MW of the GST tag alone is 26 KDa.

**Dilution**

WB~~1:500~1000

IHC~~1:100~500

IF~~1:50~200

E~~N/A

**Format**

Clear, colorless solution in phosphate buffered saline, pH 7.2 .

**Storage**

Store at -20°C or lower. Aliquot to avoid repeated freezing and thawing.

**Precautions**

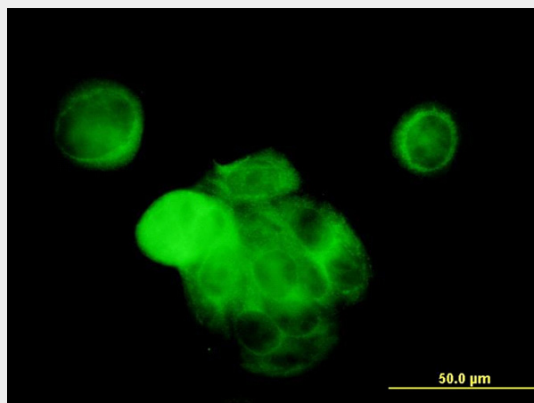
MAPK13 Antibody (monoclonal) (M02) is for research use only and not for use in diagnostic or therapeutic procedures.

**MAPK13 Antibody (monoclonal) (M02) - Protocols**

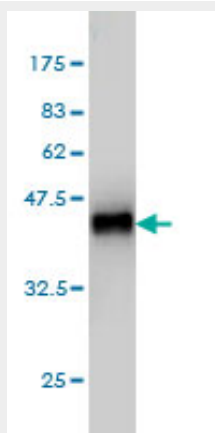
Provided below are standard protocols that you may find useful for product applications.

- [Western Blot](#)
- [Blocking Peptides](#)
- [Dot Blot](#)
- [Immunohistochemistry](#)
- [Immunofluorescence](#)
- [Immunoprecipitation](#)
- [Flow Cytometry](#)
- [Cell Culture](#)

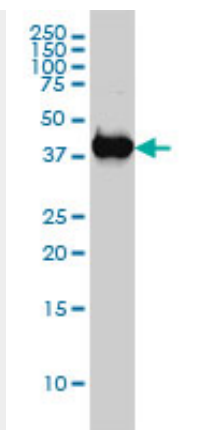
#### MAPK13 Antibody (monoclonal) (M02) - Images



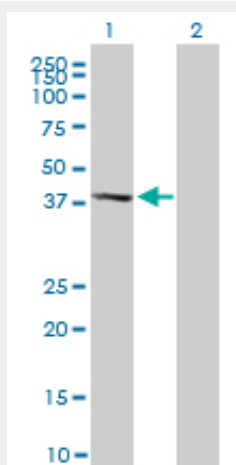
Immunofluorescence of monoclonal antibody to MAPK13 on MCF-7 cell . [antibody concentration 10 ug/ml]



Antibody Reactive Against Recombinant Protein. Western Blot detection against Immunogen (38.28 KDa) .



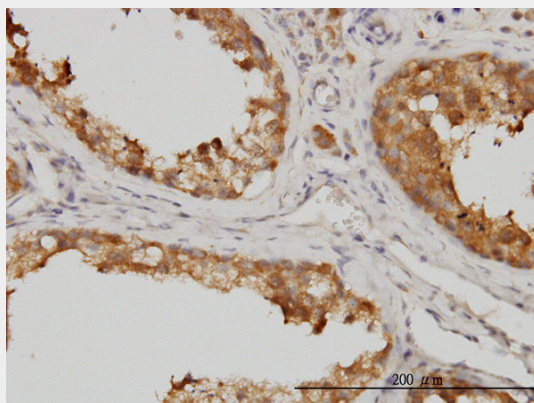
MAPK13 monoclonal antibody (M02), clone 2D8 Western Blot analysis of MAPK13 expression in MCF-7 (Cat # AT2786a)



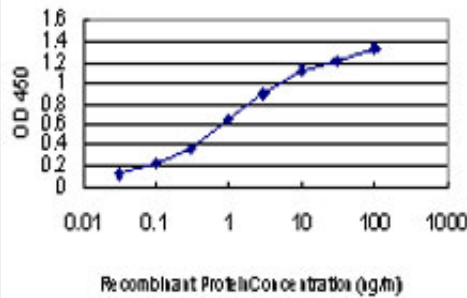
Western Blot analysis of MAPK13 expression in transfected 293T cell line by MAPK13 monoclonal antibody (M02), clone 2D8.

Lane 1: MAPK13 transfected lysate(42.1 KDa).

Lane 2: Non-transfected lysate.



Immunoperoxidase of monoclonal antibody to MAPK13 on formalin-fixed paraffin-embedded human testis. [antibody concentration 1 ug/ml]



Detection limit for recombinant GST tagged MAPK13 is approximately 0.1ng/ml as a capture antibody.

### **MAPK13 Antibody (monoclonal) (M02) - Background**

The protein encoded by this gene is a member of the MAP kinase family. MAP kinases act as an integration point for multiple biochemical signals, and are involved in a wide variety of cellular processes such as proliferation, differentiation, transcription regulation and development. This kinase is closely related to p38 MAP kinase, both of which can be activated by proinflammatory cytokines and cellular stress. MAP kinase kinases 3, and 6 can phosphorylate and activate this kinase. Transcription factor ATF2, and microtubule dynamics regulator stathmin have been shown to be the substrates of this kinase.

### **MAPK13 Antibody (monoclonal) (M02) - References**

Variation at the NFATC2 Locus Increases the Risk of Thiazolinedione-Induced Edema in the Diabetes REduction Assessment with ramipril and rosiglitazone Medication (DREAM) Study. Bailey SD, et al. Diabetes Care, 2010 Jul 13. PMID 20628086. Human p38 delta MAP kinase mediates UV irradiation induced up-regulation of the gene expression of chemokine BRAC/CXCL14. Ozawa S, et al. Biochem Biophys Res Commun, 2010 Jun 11. PMID 20478268. p38delta mitogen-activated protein kinase regulates skin homeostasis and tumorigenesis. Efimova T. Cell Cycle, 2010 Feb 1. PMID 20090411. Polymorphisms in innate immunity genes and patients response to dendritic cell-based HIV immuno-treatment. Segat L, et al. Vaccine, 2010 Mar 2. PMID 20056178. Gene-centric association signals for lipids and apolipoproteins identified via the HumanCVD BeadChip. Talmud PJ, et al. Am J Hum Genet, 2009 Nov. PMID 19913121.